

- Place glasses under a gentle flow of cold water then inside of the glasses lens the Fresnel prism is to be placed. Push the smooth side of the Fresnel prism down onto the water.
- Squeeze out any excess water and air bubbles and dry.

Cleaning your Fresnel prism

The Fresnel prism can be cleaned as you normally clean your glasses with a soft, dry cloth. You can use a soft toothbrush to gently remove dust from the ridges of the prism.

You can occasionally thoroughly clean your prism and glasses with warm water and soap. You can remove your prism by placing your finger nail between the prism and the lens of your glasses and prising it off.

Do not do this too often as the edges of the prism will curl upwards and it won't lie flat on your glasses.

CONTACT US:

TELEPHONE: 01463 706331

ADDRESS:

National Treatment Centre Highland
Inverness Campus
Inverness
IV2 5NA

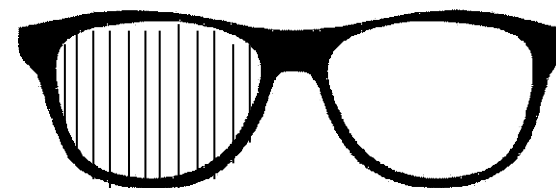
At times the telephone may be in use or on an answer phone. Please leave a message including your name and date of birth. One of the team will get back to you as soon as possible.

Please note the number from the department will appear as an 0800/withheld number on your telephone/mobile.

ORTHOPTIST NAME _____



HOW TO FIT A FRESNEL PRISM



**THIS LEAFLET IS DESIGNED TO HELP
YOU FIT A FRESNEL PRISM ONTO
YOUR GLASSES**



What is a Fresnel prism?

A Fresnel prism is a transparent piece of plastic which is usually fitted to the inside lens of your glasses to correct double vision.

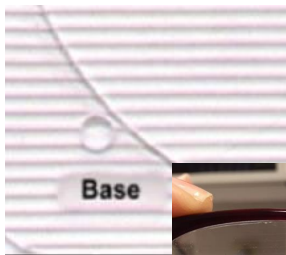
You require a _____ diopetre prism. Diopetre is the measure of strength of the Fresnel prism.

Fitting your Fresnel prism

Fit the Fresnel onto the inside of the lens.

Your Fresnel Prism needs to be fitted base _____ onto the _____ lens.

- When your prism arrives it is attached to a border which tells you where the base is.



Fresnel prism.
the lens.

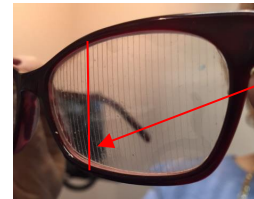
Detect the smooth side of the
This is the side that attaches to

- If your prism is to be fitted base out, place the base of the prism on the inside of the lens with the base near the arm of the glasses. The lines of the prism will run vertically.



Base OUT prism will be here

- If your prism is to be fitted base in, place the base of the prism on the inside of the lens with the base near the nose pads. The lines of the prism will run vertically.



Base IN prism will be here

- If your prism is to be fitted base up, place the base of the prism on the inside of the lens with the base near the top rim of the lens. The lines of the prism will run horizontally.



Base UP prism will be here

- If your prism is to be fitted base down, place the base of the prism on the inside of the lens with the base near the bottom rim of the lens. The lines of the prism will run horizontally.

Base DOWN prism will be here

- Holding the prism in place against the inside of the lens, draw on the rough side of the prism around the shape of the lens with a non-permanent marker.
- Carefully cut the prism out using a small pair of scissors to fit the lens.