



# Lochaber Redesign: Community Stakeholder Update

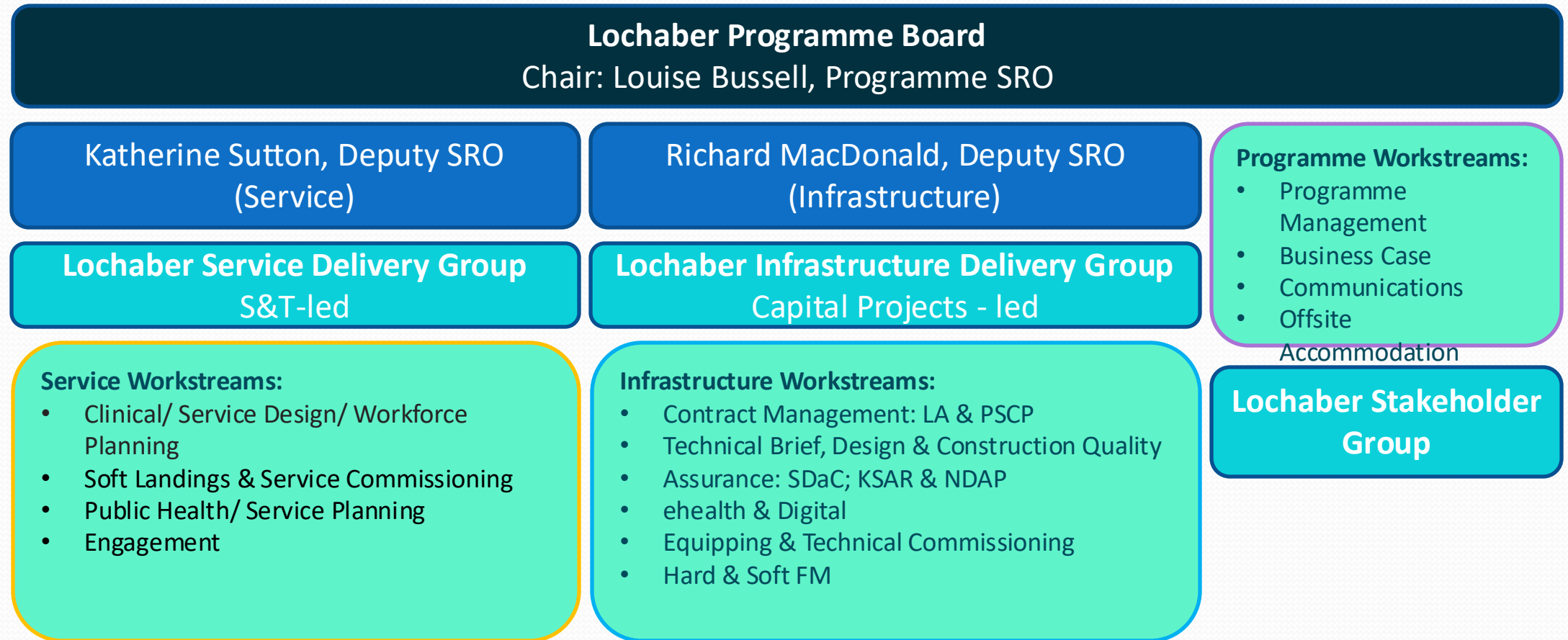
February 2025



# Remobilisation

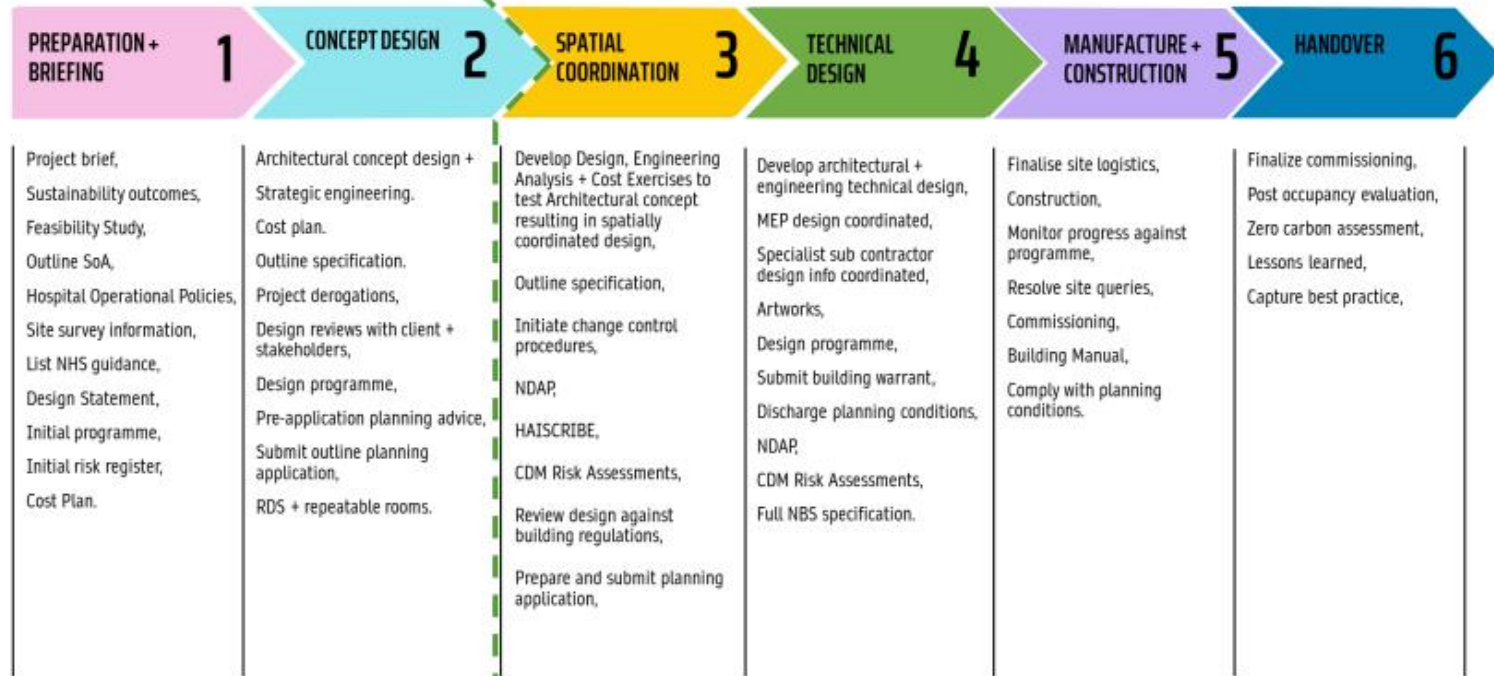
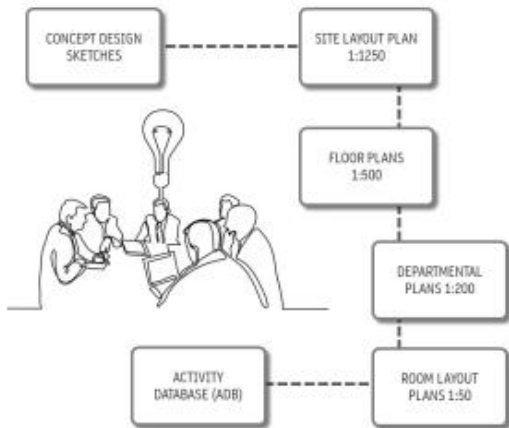
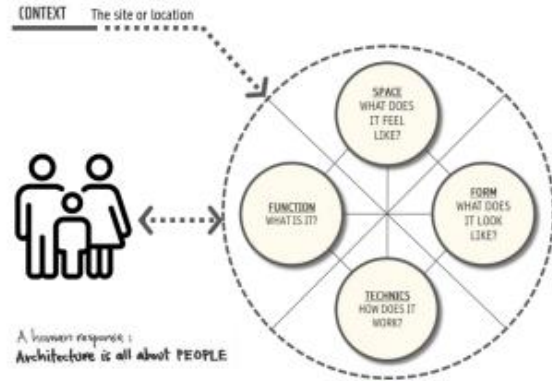
- Formal restart in April
- Initial meetings held with PSCP:
  - Team confirmed: same companies, mostly the same personnel.
  - Budget will increase due to pause, market changes and inflation – impact tbc.
  - Programme under discussion – some additional time needed to allow for team disengagement with current projects, familiarisation for new members, review of work to date to ensure it remains valid.  
Indications are OBC submission in May 2026, FBC in July 2027, Construction from October 2027.
- Internal review of resource and structure, dedicated project management support for service delivery team enabling a more focussed approach.

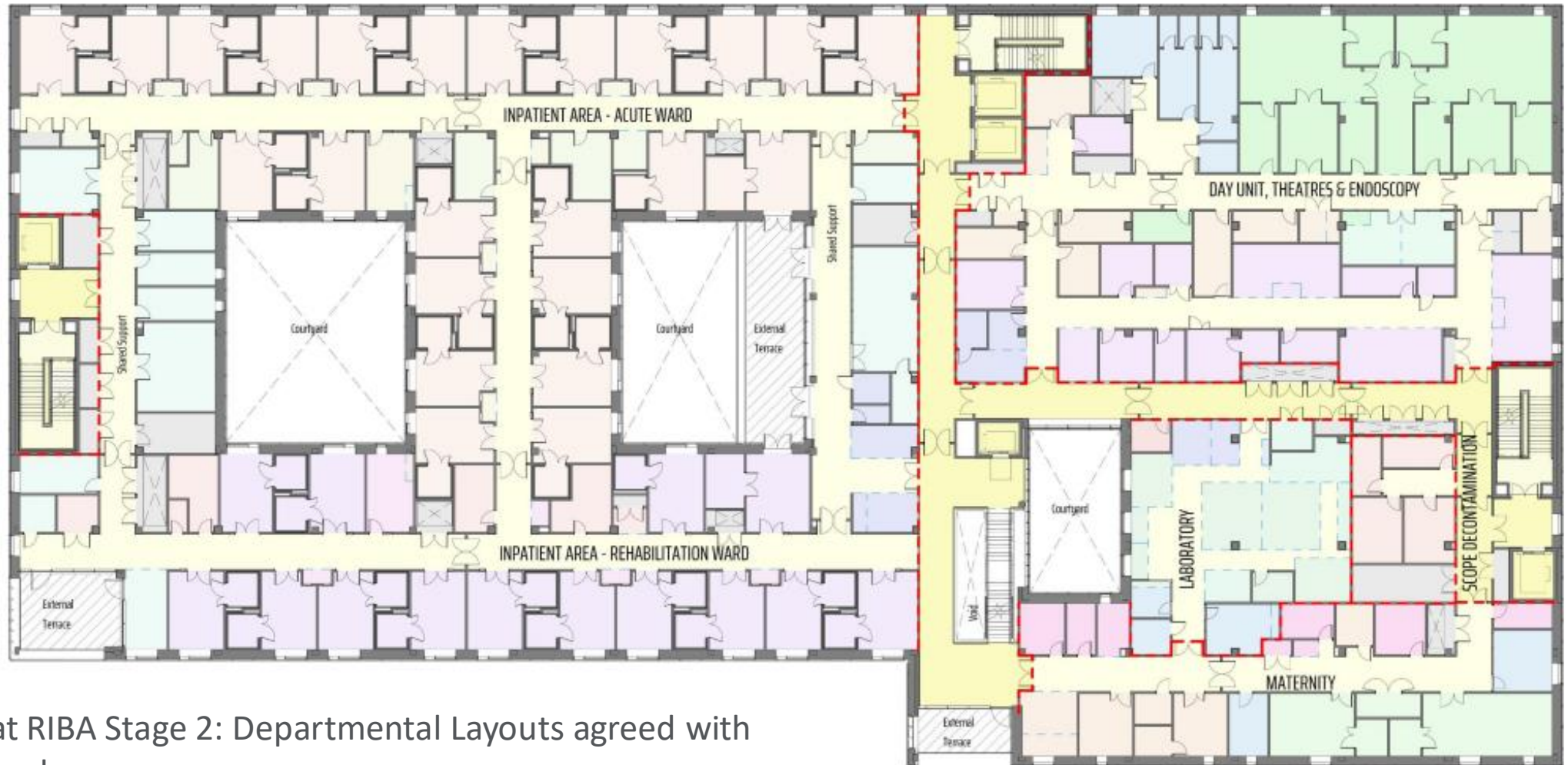
# Revised Internal Structure



# Infrastructure Design

- Where we left off:
  - RIBA Stage 2 design complete: 1:200 layouts frozen
  - Modern Methods of Construction opportunities report issued
  - Energy solution option report issued
- Next steps:
  - RIBA Stage 2 review, technical and clinical
  - RIBA Stage 3+ Design: Spatial Design, Technical coordination and development
  - Interface to external Stakeholder groups (Local Planning Authority, NHSScotland Assure, Public, Building Control, SFRS)
  - Planning for construction: RDD/ workpackage development/ technical submissions
  - Engagement with Sustainable Design & Construction review, Key Stage Assurance Review, National Design Assessment Process Review.
  - Outline Business Case





Level of Detail at RIBA Stage 2: Departmental Layouts agreed with individual rooms shown

- 26 Room Layouts at Status B (Accepted subject to comment)
- Final review to update from 1:200 design freeze (status A)





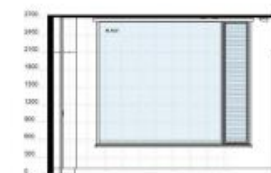
- Room Data Sheets: review and finalise Equipment Lists
- Equipment loaded into room layout drawings
- Generation of Final Equipment List (from BIM model)
- Co-ordination with Building elements (structure, doors, windows, services etc)



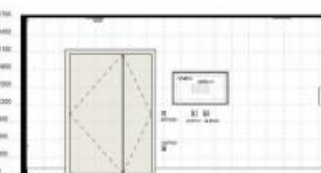
**FLOOR PLAN**  
NOTE  
Window self options to be considered for upper floors with H&M4



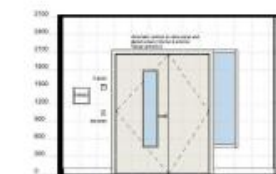
Copyright, Keele Design, Ltd. ©  
Figured dimensions only are to be taken from this drawing.  
All dimensions are to be checked on site before any work is put in hand. If 18.08.2017.  
ADP.  
CDEI  
FLOOR EXTRACTION & RISK REDUCTION HAS BEEN UNDERTAKEN AND RECORDED ABOVE APPROPRIATELY, IN ACCORDANCE WITH THE REQUIREMENTS OF THE CONSTRUCTION (DESIGN AND MANAGEMENT) REGULATIONS 2017 AND THE ASSOCIATED "Industry Standard Template".  
0 1 2 3m  
Scale 1:50  
Note  
Drawing layout title enclosed with BIM coordinate.



**ELEVATION A**



**ELEVATION B**



**ELEVATION C**



**ELEVATION D**

Code	Description	Group	Qty
84011	84011 medical hospital patient, vitreous fibre, no big holes, no surface integral heat cut, 1000mm		1
84012	84012 medical hospital patient, vitreous fibre, no big holes, no surface integral heat cut, 1000mm		1
84013	84013 medical hospital patient, vitreous fibre, no big holes, no surface integral heat cut, 1000mm		1
84014	84014 medical hospital patient, vitreous fibre, no big holes, no surface integral heat cut, 1000mm		1
84015	84015 medical hospital patient, vitreous fibre, no big holes, no surface integral heat cut, 1000mm		1
84016	84016 medical hospital patient, vitreous fibre, no big holes, no surface integral heat cut, 1000mm		1
84017	84017 medical hospital patient, vitreous fibre, no big holes, no surface integral heat cut, 1000mm		1
84018	84018 medical hospital patient, vitreous fibre, no big holes, no surface integral heat cut, 1000mm		1
84019	84019 medical hospital patient, vitreous fibre, no big holes, no surface integral heat cut, 1000mm		1
84020	84020 medical hospital patient, vitreous fibre, no big holes, no surface integral heat cut, 1000mm		1
84021	84021 medical hospital patient, vitreous fibre, no big holes, no surface integral heat cut, 1000mm		1
84022	84022 medical hospital patient, vitreous fibre, no big holes, no surface integral heat cut, 1000mm		1
84023	84023 medical hospital patient, vitreous fibre, no big holes, no surface integral heat cut, 1000mm		1
84024	84024 medical hospital patient, vitreous fibre, no big holes, no surface integral heat cut, 1000mm		1
84025	84025 medical hospital patient, vitreous fibre, no big holes, no surface integral heat cut, 1000mm		1
84026	84026 medical hospital patient, vitreous fibre, no big holes, no surface integral heat cut, 1000mm		1
84027	84027 medical hospital patient, vitreous fibre, no big holes, no surface integral heat cut, 1000mm		1
84028	84028 medical hospital patient, vitreous fibre, no big holes, no surface integral heat cut, 1000mm		1
84029	84029 medical hospital patient, vitreous fibre, no big holes, no surface integral heat cut, 1000mm		1
84030	84030 medical hospital patient, vitreous fibre, no big holes, no surface integral heat cut, 1000mm		1
84031	84031 medical hospital patient, vitreous fibre, no big holes, no surface integral heat cut, 1000mm		1
84032	84032 medical hospital patient, vitreous fibre, no big holes, no surface integral heat cut, 1000mm		1
84033	84033 medical hospital patient, vitreous fibre, no big holes, no surface integral heat cut, 1000mm		1
84034	84034 medical hospital patient, vitreous fibre, no big holes, no surface integral heat cut, 1000mm		1
84035	84035 medical hospital patient, vitreous fibre, no big holes, no surface integral heat cut, 1000mm		1
84036	84036 medical hospital patient, vitreous fibre, no big holes, no surface integral heat cut, 1000mm		1
84037	84037 medical hospital patient, vitreous fibre, no big holes, no surface integral heat cut, 1000mm		1
84038	84038 medical hospital patient, vitreous fibre, no big holes, no surface integral heat cut, 1000mm		1
84039	84039 medical hospital patient, vitreous fibre, no big holes, no surface integral heat cut, 1000mm		1
84040	84040 medical hospital patient, vitreous fibre, no big holes, no surface integral heat cut, 1000mm		1
84041	84041 medical hospital patient, vitreous fibre, no big holes, no surface integral heat cut, 1000mm		1
84042	84042 medical hospital patient, vitreous fibre, no big holes, no surface integral heat cut, 1000mm		1
84043	84043 medical hospital patient, vitreous fibre, no big holes, no surface integral heat cut, 1000mm		1
84044	84044 medical hospital patient, vitreous fibre, no big holes, no surface integral heat cut, 1000mm		1
84045	84045 medical hospital patient, vitreous fibre, no big holes, no surface integral heat cut, 1000mm		1
84046	84046 medical hospital patient, vitreous fibre, no big holes, no surface integral heat cut, 1000mm		1
84047	84047 medical hospital patient, vitreous fibre, no big holes, no surface integral heat cut, 1000mm		1
84048	84048 medical hospital patient, vitreous fibre, no big holes, no surface integral heat cut, 1000mm		1
84049	84049 medical hospital patient, vitreous fibre, no big holes, no surface integral heat cut, 1000mm		1
84050	84050 medical hospital patient, vitreous fibre, no big holes, no surface integral heat cut, 1000mm		1
84051	84051 medical hospital patient, vitreous fibre, no big holes, no surface integral heat cut, 1000mm		1
84052	84052 medical hospital patient, vitreous fibre, no big holes, no surface integral heat cut, 1000mm		1
84053	84053 medical hospital patient, vitreous fibre, no big holes, no surface integral heat cut, 1000mm		1
84054	84054 medical hospital patient, vitreous fibre, no big holes, no surface integral heat cut, 1000mm		1
84055	84055 medical hospital patient, vitreous fibre, no big holes, no surface integral heat cut, 1000mm		1
84056	84056 medical hospital patient, vitreous fibre, no big holes, no surface integral heat cut, 1000mm		1
84057	84057 medical hospital patient, vitreous fibre, no big holes, no surface integral heat cut, 1000mm		1
84058	84058 medical hospital patient, vitreous fibre, no big holes, no surface integral heat cut, 1000mm		1
84059	84059 medical hospital patient, vitreous fibre, no big holes, no surface integral heat cut, 1000mm		1
84060	84060 medical hospital patient, vitreous fibre, no big holes, no surface integral heat cut, 1000mm		1
84061	84061 medical hospital patient, vitreous fibre, no big holes, no surface integral heat cut, 1000mm		1
84062	84062 medical hospital patient, vitreous fibre, no big holes, no surface integral heat cut, 1000mm		1
84063	84063 medical hospital patient, vitreous fibre, no big holes, no surface integral heat cut, 1000mm		1
84064	84064 medical hospital patient, vitreous fibre, no big holes, no surface integral heat cut, 1000mm		1
84065	84065 medical hospital patient, vitreous fibre, no big holes, no surface integral heat cut, 1000mm		1
84066	84066 medical hospital patient, vitreous fibre, no big holes, no surface integral heat cut, 1000mm		1
84067	84067 medical hospital patient, vitreous fibre, no big holes, no surface integral heat cut, 1000mm		1
84068	84068 medical hospital patient, vitreous fibre, no big holes, no surface integral heat cut, 1000mm		1
84069	84069 medical hospital patient, vitreous fibre, no big holes, no surface integral heat cut, 1000mm		1
84070	84070 medical hospital patient, vitreous fibre, no big holes, no surface integral heat cut, 1000mm		1
84071	84071 medical hospital patient, vitreous fibre, no big holes, no surface integral heat cut, 1000mm		1
84072	84072 medical hospital patient, vitreous fibre, no big holes, no surface integral heat cut, 1000mm		1
84073	84073 medical hospital patient, vitreous fibre, no big holes, no surface integral heat cut, 1000mm		1
84074	84074 medical hospital patient, vitreous fibre, no big holes, no surface integral heat cut, 1000mm		1
84075	84075 medical hospital patient, vitreous fibre, no big holes, no surface integral heat cut, 1000mm		1
84076	84076 medical hospital patient, vitreous fibre, no big holes, no surface integral heat cut, 1000mm		1
84077	84077 medical hospital patient, vitreous fibre, no big holes, no surface integral heat cut, 1000mm		1
84078	84078 medical hospital patient, vitreous fibre, no big holes, no surface integral heat cut, 1000mm		1
84079	84079 medical hospital patient, vitreous fibre, no big holes, no surface integral heat cut, 1000mm		1
84080	84080 medical hospital patient, vitreous fibre, no big holes, no surface integral heat cut, 1000mm		1
84081	84081 medical hospital patient, vitreous fibre, no big holes, no surface integral heat cut, 1000mm		1
84082	84082 medical hospital patient, vitreous fibre, no big holes, no surface integral heat cut, 1000mm		1
84083	84083 medical hospital patient, vitreous fibre, no big holes, no surface integral heat cut, 1000mm		1
84084	84084 medical hospital patient, vitreous fibre, no big holes, no surface integral heat cut, 1000mm		1
84085	84085 medical hospital patient, vitreous fibre, no big holes, no surface integral heat cut, 1000mm		1
84086	84086 medical hospital patient, vitreous fibre, no big holes, no surface integral heat cut, 1000mm		1
84087	84087 medical hospital patient, vitreous fibre, no big holes, no surface integral heat cut, 1000mm		1
84088	84088 medical hospital patient, vitreous fibre, no big holes, no surface integral heat cut, 1000mm		1
84089	84089 medical hospital patient, vitreous fibre, no big holes, no surface integral heat cut, 1000mm		1
84090	84090 medical hospital patient, vitreous fibre, no big holes, no surface integral heat cut, 1000mm		1
84091	84091 medical hospital patient, vitreous fibre, no big holes, no surface integral heat cut, 1000mm		1
84092	84092 medical hospital patient, vitreous fibre, no big holes, no surface integral heat cut, 1000mm		1
84093	84093 medical hospital patient, vitreous fibre, no big holes, no surface integral heat cut, 1000mm		1
84094	84094 medical hospital patient, vitreous fibre, no big holes, no surface integral heat cut, 1000mm		1
84095	84095 medical hospital patient, vitreous fibre, no big holes, no surface integral heat cut, 1000mm		1
84096	84096 medical hospital patient, vitreous fibre, no big holes, no surface integral heat cut, 1000mm		1
84097	84097 medical hospital patient, vitreous fibre, no big holes, no surface integral heat cut, 1000mm		1
84098	84098 medical hospital patient, vitreous fibre, no big holes, no surface integral heat cut, 1000mm		1
84099	84099 medical hospital patient, vitreous fibre, no big holes, no surface integral heat cut, 1000mm		1
84100	84100 medical hospital patient, vitreous fibre, no big holes, no surface integral heat cut, 1000mm		1

REV	DESCRIPTION	DATE	BY	CHK	DATE
001	Issue issued as per	16/07/2017			
002	Issue issued as per	16/07/2017			
003	Issue issued as per	16/07/2017			
004	Issue issued as per	16/07/2017			

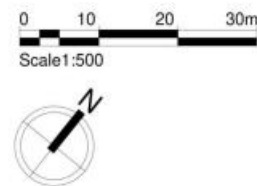
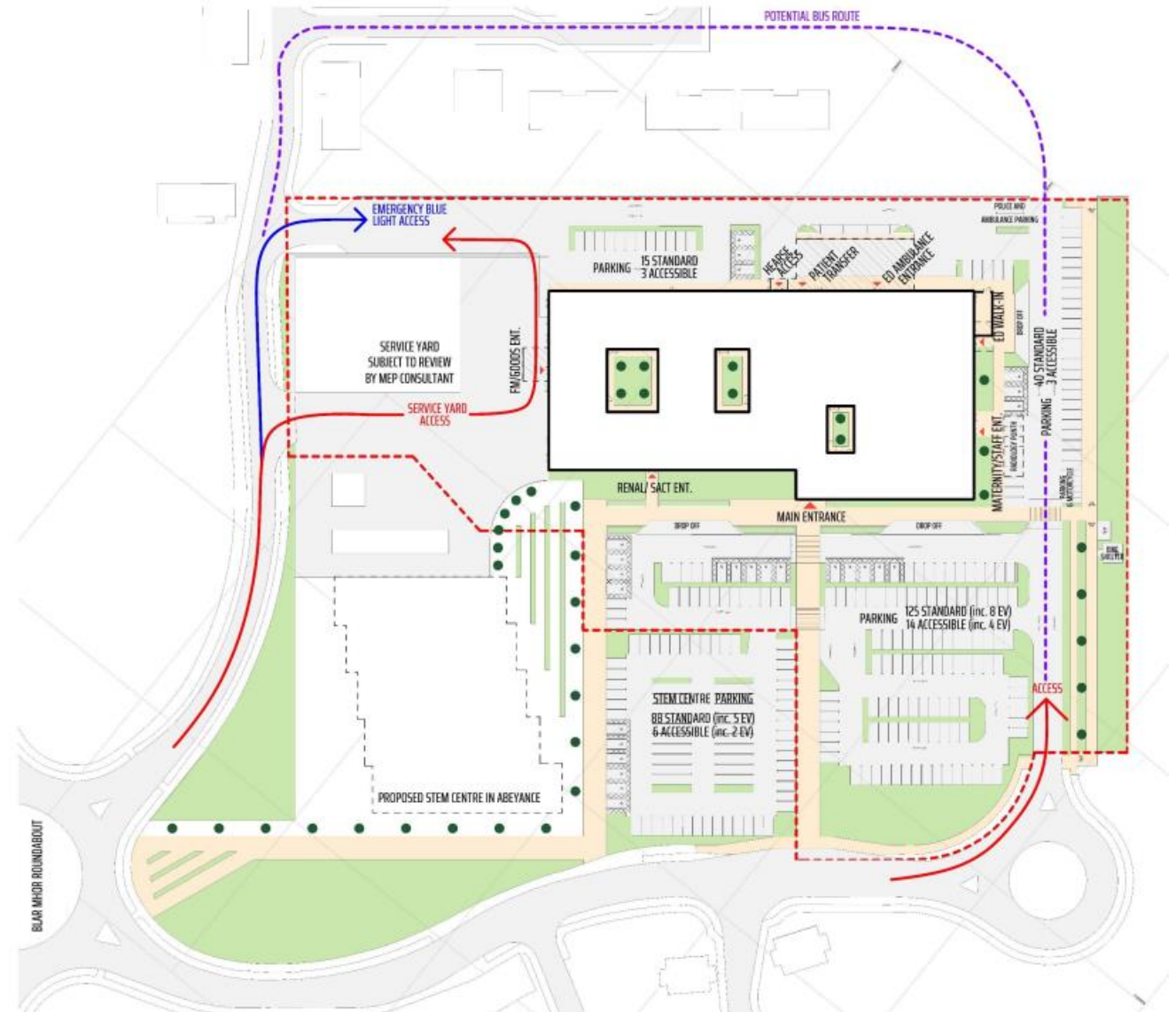


www.kepni.co.uk  
 Project:  
 LOCKSHEP HOSPITAL  
 SHEETS  
 SHEET PATIENT ROOM (LEFT HAND)  
 Project No. 238862  
 Rev. 03  
 Project No. H338\_238862-REV-03-001-0-0-401001  
 Status: Status Code  
 For Review: 53  
 Created: 08/2017  
 Checked: 07/2017  
 Date: 08/2017  
 Author: 41  
 Submitter:

- Strategy workshops to agree key themes, development of a Bespoke and “Front of House” identity
- Standardisation and optimising Value for Money (palette and materials)
- Review with key stakeholders for accessibility, functionality etc.
- Coordinate art, signage etc.



- Pre Application discussions (on-going)
- Background and existing PPIp (Planning in Principle)
- Existing conditions review
- Design considerations and updates
- Bus route, increased site area, split/ use of NHS site vs whole site etc
- Energy centre and service access.



- Local Authority Planning input
- Options and commercial impact
- Modern Methods of Construction investigation & Development - Specialist Subcontractor input
- Design co-ordination & Development



- Agree Modern Methods of Construction project options
- Early Subcontractor engagement
- Understand logistics

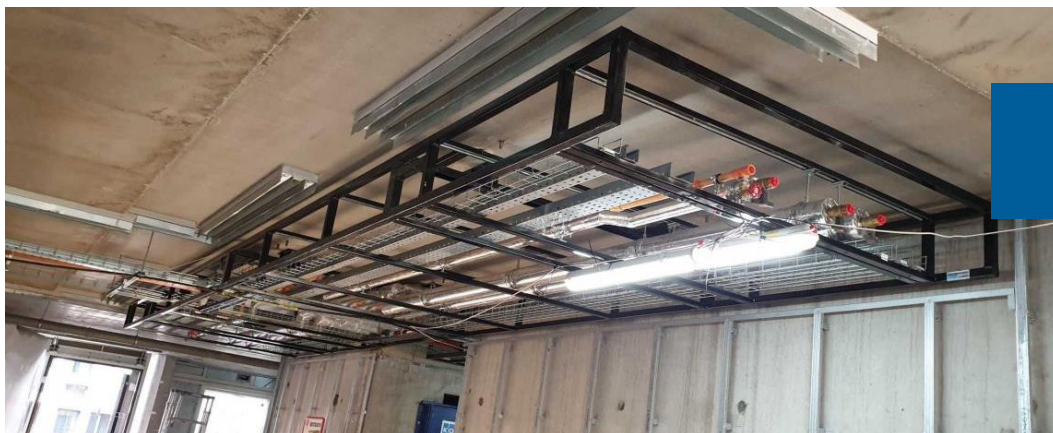
**Precast Concrete Frame and Slab**

Precast concrete frame and slab is a viable option and should be considered for the project



**Corridor Service Modules**

Viable option for consideration on the project



**Precast Concrete Cladding**

Viable option worth consideration due to programme and quality betterment.



- Scottish Health Technical Note (SHTN 02-01) Sustainable Design and Construction Guide sets sustainability targets under themes of Wellbeing, Circularity and Climate Change.
- Sustainable and Cost-efficient construction and operations (CAPEX/OPEX): detailed modelling and lifecycle costing.
- Future energy demand and carbon output modelling to inform short/long term net zero strategy.
- Engage with formal SDaC review.

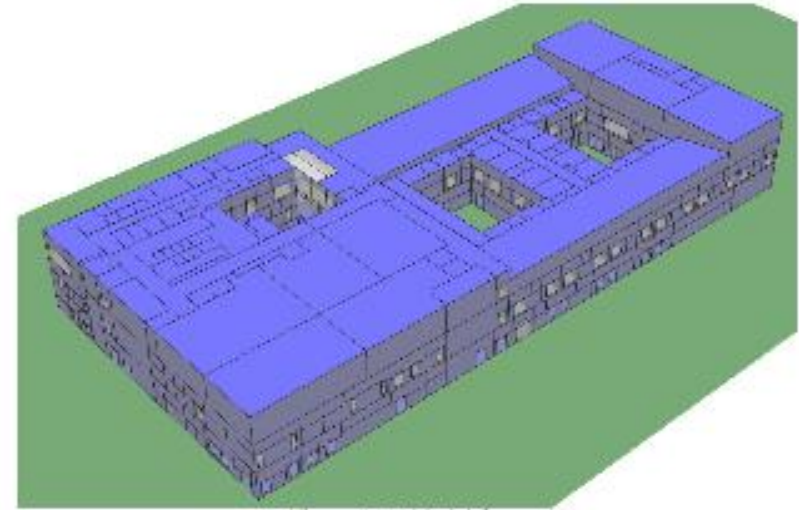


Figure 3.6.2 Model Geometry



Figure 3.6.3 - L00 Tested Spaces



**NDAP:** NHSScotland Design Assurance Process is Overseen by Architecture + Design Scotland and NHS Scotland. A presentation and assessment process, based on achieving benchmarked design quality and clinical and technical compliance.

**NHS Assure:** Established in 2018 to provide services and support to the NHS with regards to technical compliance of design through Key Stage Assurance Review (KSAR) process.

**AEDET:** Achieving Excellence Design Evaluation Toolkit- Design Quality indicator tool based on completing a series of responses and statements against non-technical sub heading topics.

**SDaC:** Sustainable Design & Construction Evaluation Tool evaluates the design under themes of Wellbeing, Circularlity & Climate Change.

**HAI- SCRIBE:** Scottish Health Facilities Note (SHFN 30) Health Associated Infections - System for Controlling Risk in the Built Environment assesses the design's response to Infection Control measures and risk.



